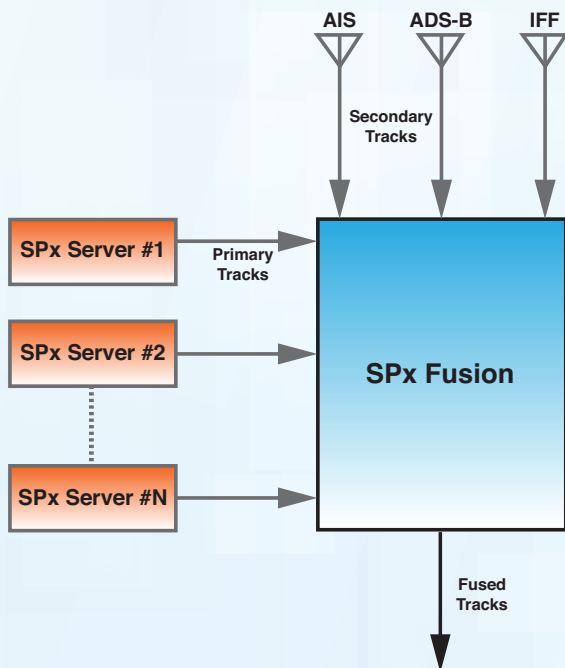


SPx Fusion

Multi-Sensor Track Correlation



Features:

- Multiple sensor inputs
- Any combination of primary and secondary sensor input
- Accepts up to 4 primary track sources (additional sources may be supported upon request)
- Support for AIS, ADS-B and IFF secondary sensors
- Configurable sensor weighting and priority
- Configuration file support
- Moving platform support
- Remote control over network socket
- Available as C++ library or standalone server application
- Client interface using standard SPx library software
- Available for Windows and Linux
- Network output of fused tracks
- Support for ASTERIX CAT 019, 020, 021, 034 and 048 input

SPx Fusion is a component of the Cambridge Pixel SPx radar processing family and provides the capability to fuse observations from multiple independent sensors into a single stream of correlated reports. SPx Fusion is available as a development library for system integrators to build into their own command and control applications or as an executable application that produces a network stream of fused track data and requires no additional development.

Sensors may be co-located but of different types (e.g. primary and secondary radar) in which case the fusion generates a single set of output reports without duplicates. Alternatively, sensors may be geographically separated but with overlapping areas, in which case the fusion provides handover support as targets move from each sensor to the next, preserving a single global target ID across the combined coverage area. A combination of the two modes is also supported.

Multiple Sensors

The sensor data supplied to SPx Fusion be derived from primary radar video (using SPx Server) or from secondary sources, such as AIS, IFF or ADS-B.

Track messages generated by processing primary radar video, using Cambridge Pixel's SPx Server application, may be input directly into the SPx Fusion Server. Tracks from multiple, separate instances of SPx Server may be input, allowing for fusion of tracks from multiple primary radars.

Equally, SPx Fusion Server will accept a combination of SPx Server tracks and secondary tracks. For example, SPx Fusion Server could be used to combine the primary target tracks extracted from a VTS radar with the AIS messages being received from an AIS base station. Alternatively, the software could combine primary target tracks from an air surveillance radar with the decoded IFF or ADS-B transponder replies of aircraft.

The SPx Fusion software allows the user to assign a "priority" and a "score" to tracks from each sensor, which means that the credibility of information from each sensor may be established. Information from sensors which are believed to be more accurate may be given greater credence than other, possibly less accurate, sensors.

Priority

Where observations for a target are received from multiple overlapping sensors, information from the sensor with the highest priority setting is used in preference to the others.

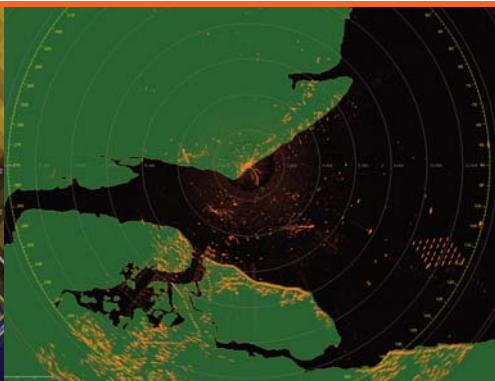
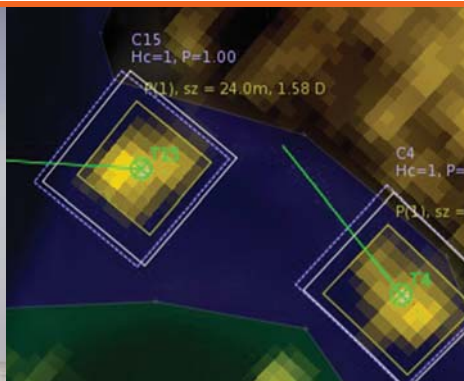
If multiple sensors share the same priority level, the decision is based on the proximity of the target to each sensor.

Score

Each sensor may be assigned a score value which gives a weight to its observations. The fusion engine only reports fused tracks if the combined score of all sensors supplying observations for the target is ≥ 1.0 .

For example, if the score for each sensor is set to 0.5, then reports will only be output for targets observed by at least two sensors.





Consistent Track Labelling

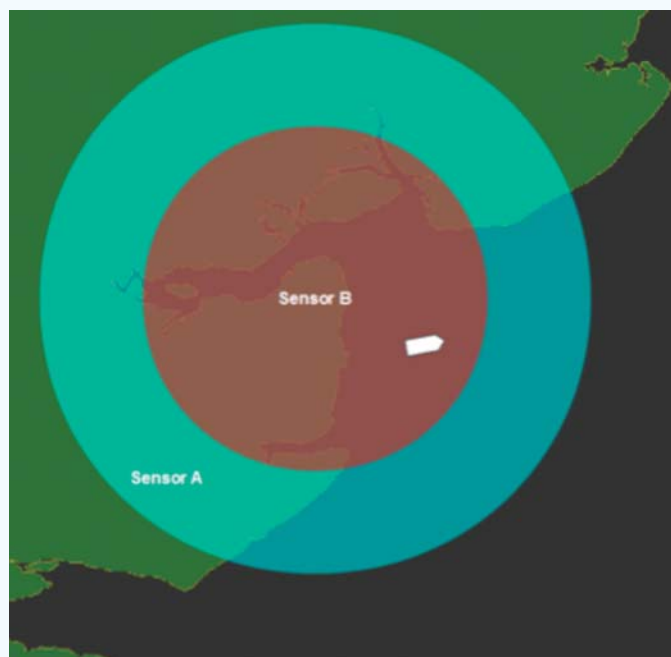
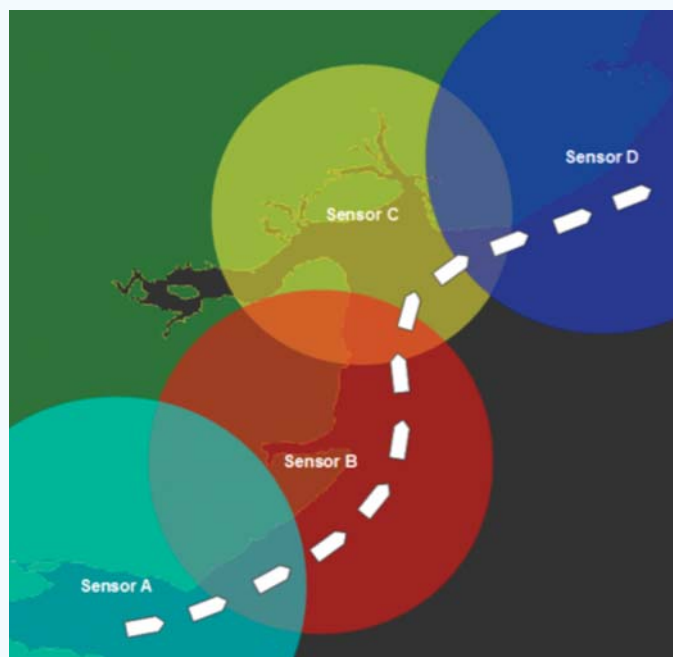
For situations where a number of radar sensors provide overlapping coverage it is often desirable for an observer to be presented with a single, consistent set of track labels across the combined coverage area. This is common in Vessel Traffic Systems (VTS) and coastal surveillance applications.

If a target is seen to traverse from the coverage of one sensor into the next, the track label should not change as it does so. Nor should the observer be presented with two or more possible tracks representing the same physical target. SPx Fusion can be used in this situation, with the observer receiving track data from SPx Fusion, rather than directly from the individual track sources.

Unified Track Output

For situations where two or more sensors are co-located, for example a primary and a secondary radar sharing the same turning gear, SPx Fusion can be used to provide a combination of the available information within a single, unified track report.

The track report for a target visible to multiple sensors will contain the most reliable information available from the sensors. Where one sensor provides information that another does not, the track report is a union of the information from both, ensuring that the fullest data is available.



For more information, please contact:



Cambridge Pixel Ltd
New Cambridge House
Litlington Royston
Herts SG8 0SS

+44 (0) 1763 852749
enquiries@cambridgepixel.com
www.cambridgepixel.com